

A

ARCHIVES

TOP-UP

MONEY FOR KIDS

You mob rich?



ARCHIVE
354340
10/12
TOP
11

FACS Library



TOP-UP?
WHAT'S THAT?



Top-Up Money
is "**FAS**" or
Family
Allowance
Supplement



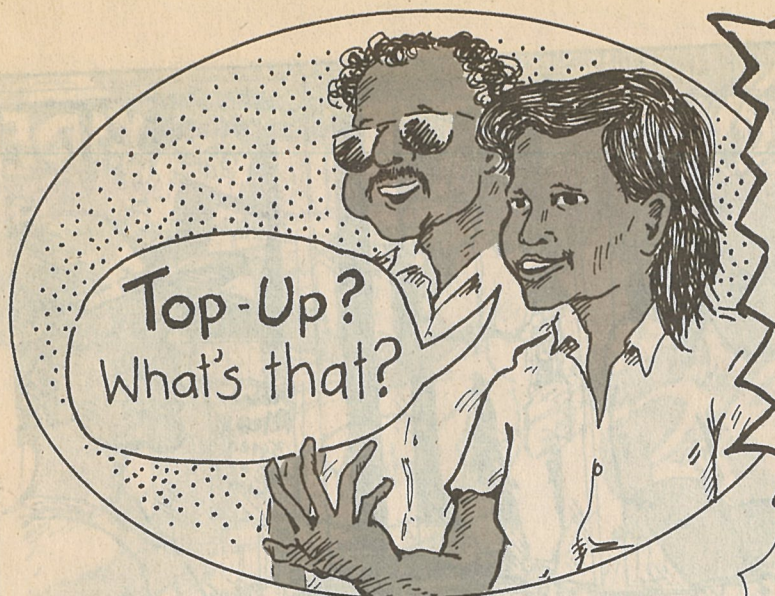
TOP UP MONEY

STORY









Top-Up Money
is "**FAS**" or
Family
Allowance
Supplement

Who can get it?

You can get it while you are:

- working on a **CDEP** community
- on a **low wage**
- on **ABSTUDY** or **AUSTUDY**



How much do you get?

- That depends on **how much you earn** or- if you are married - how much you **both** earn.



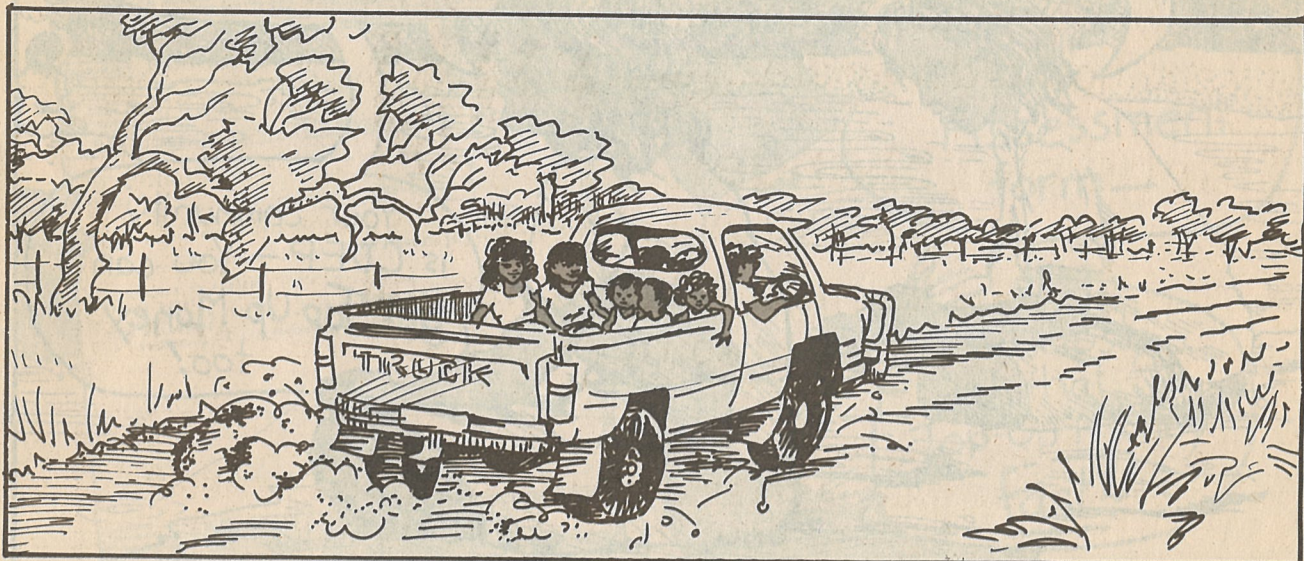
- It also depends on how **many** kids you have... and how **old** they are...

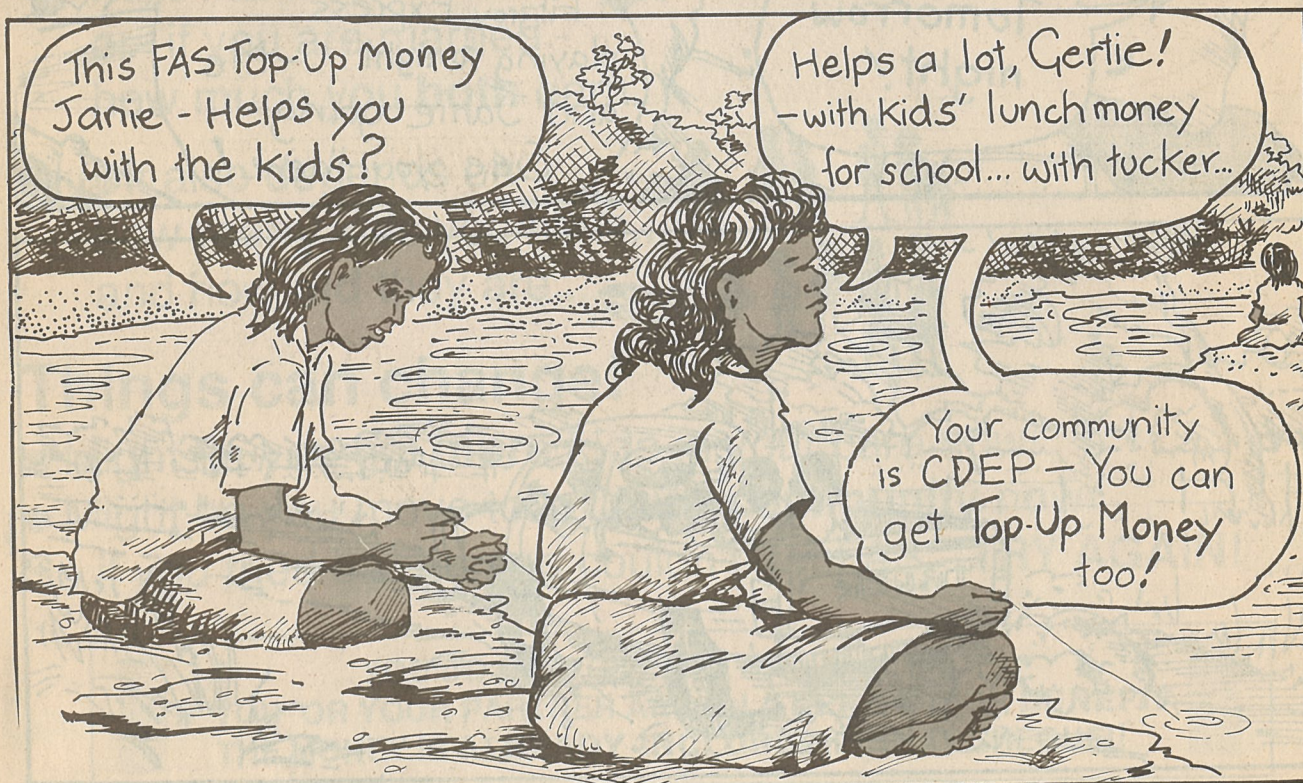
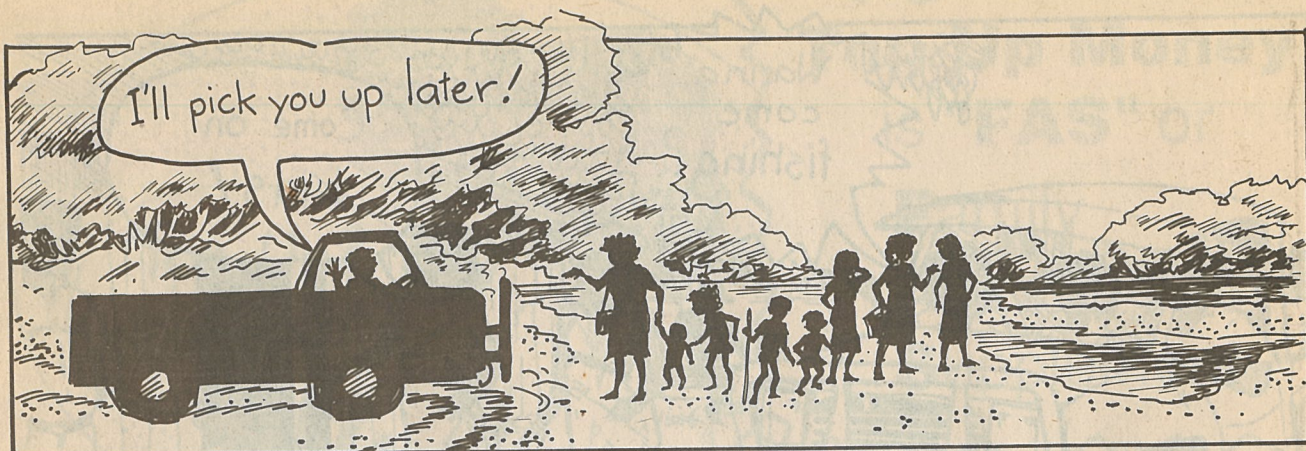


Things can change!

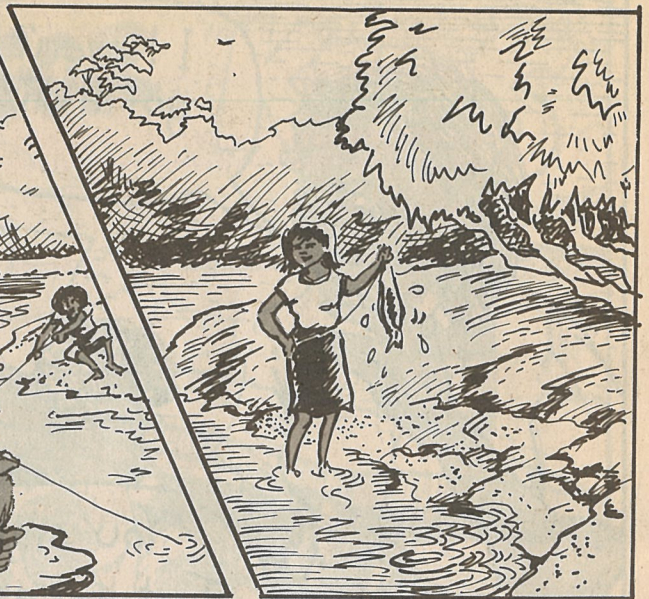
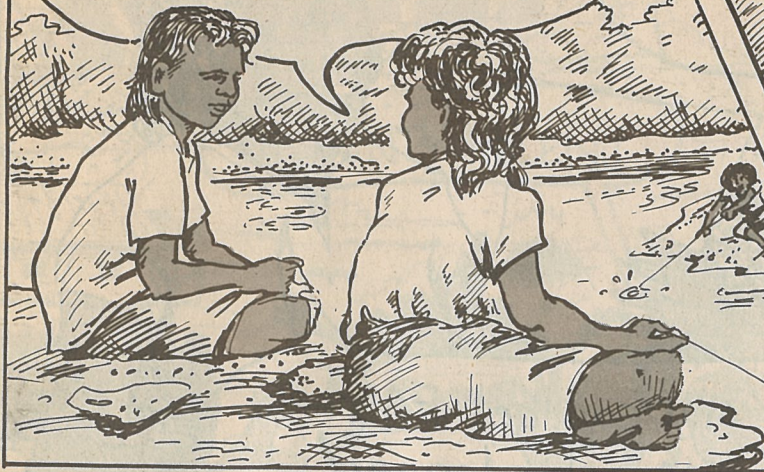
- Might be you got **more kids** in your care now!
 - Might be you move to a **CDEP community** now!
- So if you tried before and couldn't get FAS - **TRY AGAIN!**

YOU DO NOT GET FAS TOP-UP MONEY
IF YOU OR YOUR PARTNER ARE ON A PENSION OR BENEFIT-
THE MONEY IS ALREADY INCLUDED IN THAT CHEQUE!!

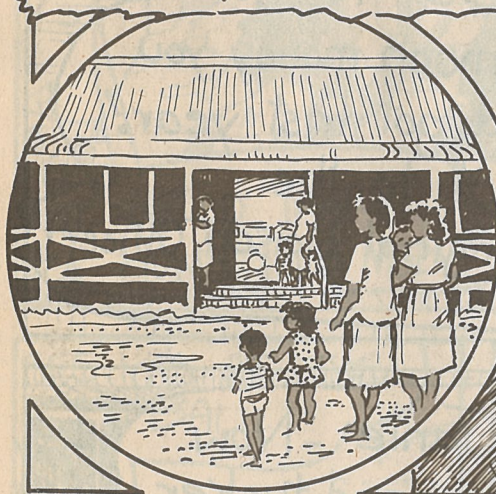




- Come with me to see
Vic, the Social Security Agent!



Janie takes Gertie to see the Social Security Agent...



You just got to
fill in this form -!
but first -

Steen



Australian Taxation Office
 11 St George's Terrace, Perth 6000
 Income Tax Assessment Act 1936
 NOTICE OF ASSESSMENT 1988
 for the year ended 30 June 1988

Your file number: _____
 Date of issue: 23 SEP 88

MRS. A. WOMAN
 1111111111
 1111111111
 1111111111

Details of your assessment: 1. 1988
 YOUR TAXABLE INCOME IS \$
 TAX ON TAXABLE INCOME
 MEDICARE LEVY
 TOTAL CREDIT FOR TAX STAMPS/GROUP CERTIFICATES
 REBATES AND OTHER CREDITS
 AMOUNT REFUNDABLE ON THIS ASSESSMENT

EXPLANATION OF CHANGES (NOTE 1)

ADJUSTMENTS TO REBATES
 SPOUSE REBATE
 ADJUSTED IN VIEW OF PERIOD OF DEPENDENCY.
 ZONE ALLOWANCE
 ADJUSTED AS A RESULT OF INFORMATION SUPPLIED.

Amount of Refund \$

NAT-98-288
 Copyright Commission of Taxation
 Your copy - please keep for your records
 See back for notes and other information

- If you got this
Tax
Assessment
form -

- It helps you
get that
Top-Up Money
fast!!



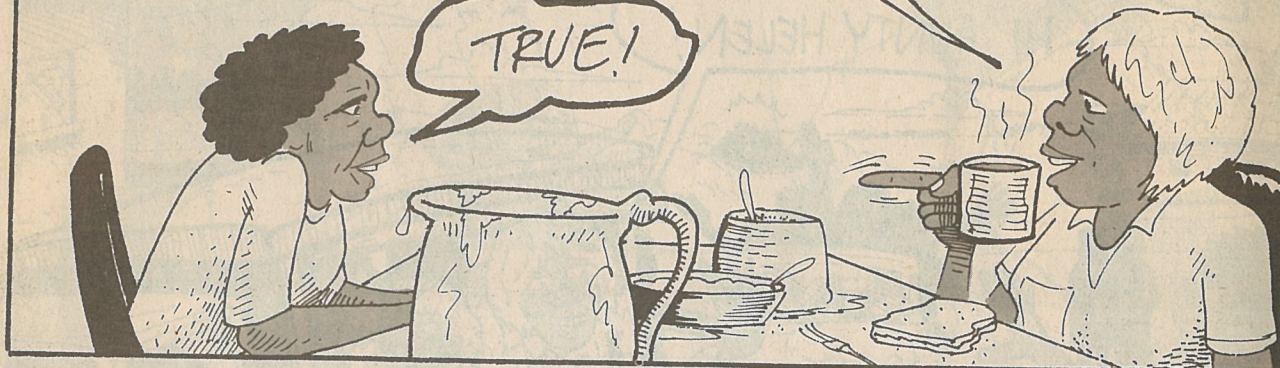
GOOD!

HELLO JOE GOOD PAINTING!
YEAH, GET SOME TUCKER!

WHAT'S THESE NEW CLOTHES YA WEARING MARY?

THIS MY NEW JOB
TRAINEE HEALTH WORKER!

TRUE!



HEY LET'S GET A BIT OF PRACTICE
THEN WE'LL CLEAN THIS MOB UP!

SURE COME ON RITA!

O.K!



SO WHAT YA JOB LIKE MARY?

GOOD TALKIN TO PEOPLE
I LIKE IT, NO MORE SIT
DOWN MONEY FOR US!



DO YA GET THIS NEW THING THEN
-EXTRA MONEY FOR KIDS !

NO IT'S A TOP UP ON
FAMILY ALLOWANCE !

OH, FAMILY ALLOWANCE!

IF YA WORKIN' YA GET IT!

WHAT'S IT CALLED AGAIN HELEN?

You can get
FAMILY ALLOWANCE SUPPLEMENT
if you are :

- On a low wage
- On **ABSTUDY** or **AUSTUDY**

If you have kids living with you then
you get **top-up money** to help you
look after those kids.

You get more money for each kid.

Ask at Social Security!

SOMETHING LIKE FAMILY
ALLOWANCE SUPPLEMENT
SORT OF EXTRA MONEY
FOR KIDS !

NEVER HEARD OF THAT ONE!

COME ON YA MOB
YOU'LL MISS THE
GAME!

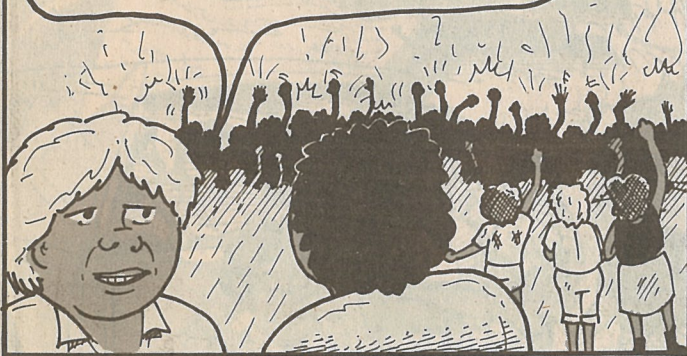
Parrpe!





LATER AFTER THE GAME....

YA KNOW THIS MONEY
FOR KIDS BUSINESS
HOW MUCH DO I GET ?



DEPENDS ON HOW
MUCH YOU MAKE ?



YA GOTTA FILL IN THIS BIG FORM!
YOU GOT THREE KIDS -
YOU MIGHT GET \$220 FOR 2 WEEKS, MAYBE MORE!



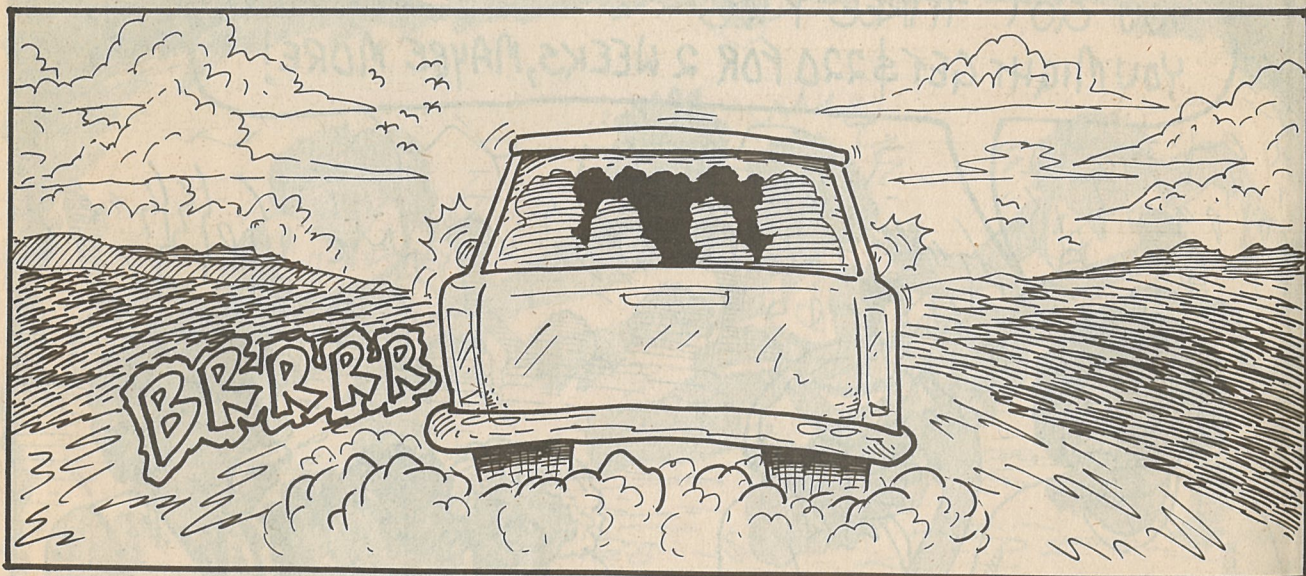
MONEY FOR KIDS, EH?
FOR TUCKER AN CLOTHES
I CAN DO WITH THAT!



SINCE I APPLIED FOR IT
I BEEN GETTING \$45
A FORTNIGHT!



AND THAT'S ON TOP OF FAMILY ALLOWANCE
COMES IN THE SAME CHEQUE AN' ALL!



NEXT DAY.....

DON'T LIKE THIS PLACE
SHOULDN'T COME HERE
IF I'M WORKING!

SOCIAL SECURITY PAY THIS
MONEY TO PEOPLE WHO **WORK**
THATS THE IDEA DONT WORRY
I'LL HELP YOU!

THEY SENT ME THIS
A WHILE AGO HELEN!

SHOULD OPEN IT UP MARY,
SHOULD HAVE JUST A LITTLE
LOOK, IT MIGHT BE -
IMPORTANT!

OK THIS IS THE FORM,
NOW WHEN WAS RITA BORN?

GLAD TO GET
OUT OF THERE!

NOVEMBER 10 YEARS AGO!

LET'S BUY SOME TUCKER NOW!





Streetwise

YOUTH RIGHTS COMICS is a Redfern Legal Centre Publishing Ltd. project.

This comic is funded by the
Department of Social Security



The purpose of this comic is to provide information on Family Allowance Supplement in an accessible and easy to read format.

Cartoonists: Prue Borthwick, Ross Carnsew, Frank McLeod,
Editor/Writer: Victoria Smith
Aboriginal consultant/ Writer:

Kathy Kum-Sing

Publishing Manager: Kate Blair

Co-ordinator: Jeremy Campbell

Distribution: Sara Knuckey,

The Streetwise Project

Committee: Penny Harrington (Disability Rights), Norie Neumark (UTS), Rick Mohr (Evaluation), Helen Whitty (Legal Aid Commission), Sharon Laura (Media), Lyn Stoker (Health), Rob Oerlemans (Youth & the Law Project)

Copyright and reproduction:

Non-profit community groups may use parts of Streetwise as long as original meaning is retained and proper credit given to Streetwise Comics. All other organizations should obtain permission from Streetwise Comics, 3 Queen St., Glebe. 2037.

Phone: (02) 552 3499

Printed by Craft Printing Industries Pty. Ltd. Enfield. NSW 2136.

ISSN 0815-0486

B91/20855(D)

